

S 56 SX

Truck-mounted concrete pump



MADE IN GERMANY
by SCHWING-Stetter 

Vertical reach		55.20 m
Concrete output	max.	162 m ³ /h
Pressure on concrete	max.	85 bar
Operating weight		45 t (on 8 × 4 chassis)



RECORD BREAKING ENGINEERING



The S 56 SX from SCHWING.

Everything you need in the 50-metres-class

With a reach height of 56 metres and a reduced weight, the new S 56 SX uncompromisingly follows the same modern SCHWING philosophy with a 5-part Roll 'n' Fold boom, 5-inch pipelines with standard elbows and a full sub frame combined with compact outrigger widths, a larger hydraulic tank and the well-known intuitive operation.

The new S 56 SX – made in Germany for the special challenges in the unique regions of this world.

The S 56 SX from SCHWING

Advantages and benefits at a glance

Pump kit

The SX outriggers by SCHWING allow the longstroke pump kit P2525 with 2.50 m long pumping cylinders to be used in this class of machine. Advantages: even smoother operation and 15 % less strokes than other pump kits available in this class.



Open hydraulic system

The open hydraulic system of the S 56 SX converts the engine power efficiently into pump power. Thus, typical output rates can be achieved with a fuel-saving engine speed of just over 1,000 rpm.



SX outriggers

The single section SX outriggers developed by SCHWING combine high torsional rigidity and excellent stability with minimum space requirement. The protected piston rod and internally laid hydraulic lines prevent damage and reduce service costs.



Boom

Thanks to the easy to operate Roll and Fold system and large opening angles of the boom sections 4 (185°) and 5 (210°), the S 56 SX is extremely flexible and safe during operation. Further benefits are the low unfolding height of just 11.50 m and large slewing range of 1 × 370°. To increase safety when pumping and to minimise the danger of blockages, only standard elbows with a large radius of 275 mm are used with the boom pipes of the S 56 SX.



Concrete valve

Thanks to its intelligent design, the ROCK valve suffers significantly less wear and tear than other concrete valves. It is also quick to clean and is unquestionably easier to maintain. The advantages for the S 56 SX: shorter servicing times, higher machine uptime and lower maintenance costs.



Supply control

The water tank can be filled and emptied via the standardised supply control unit. As well: water pump, agitator, spray hose, high-pressure cleaner and compressor can also be controlled from here – the standard for all SCHWING truck-mounted concrete pumps for greater clarity and ease of operation.



Remote control SC 30

The light weight, easy to use and comfortable SC 30 helps minimise fatigue, allowing the operator to focus on the job for extended periods. The powerful batteries guarantee an operating time of at least 8 hours.



Modern colour display: VECTOR II control System

Via the new intuitive VECTOR II control system, the operator can call up the machine data, operating statuses and selected settings of the S 56 SX and change various parameters. The integrated diagnostic system ensures safe operation and alerts the operator to maintenance intervals.



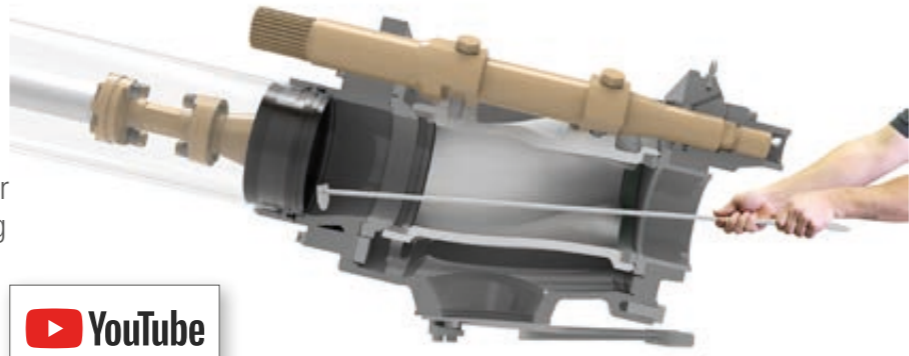
The S 56 SX from SCHWING

Advantages and benefits in detail

The ROCK

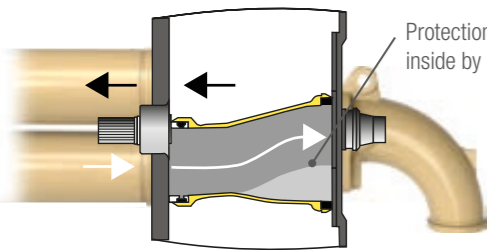
Clean faster with less water.

Due to its straight design, in comparison to other concrete valves, the ROCK valve is easier and quicker to clean. It also provides a direct view of the pumping pistons in the delivery cylinder. The pump kit can therefore be cleaned easily and conveniently within just two strokes. This saves water and reduces the time needed for cleaning.

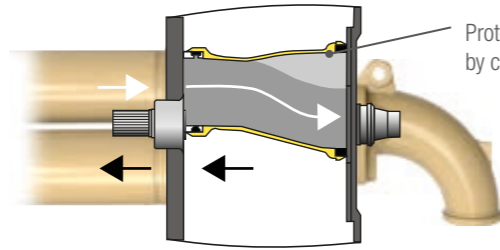


Intelligent wear protection.

The wear in the concrete valve is particularly high as the concrete is fed into the outlet at high pressure. In order to minimize this wear, at the most heavily loaded point of the ROCK concrete does not rub on steel, but rather on concrete. This is because the intelligent design of the ROCK leads to the formation of a concrete triangle after each shift. Protected by this concrete layer, the ROCK has a significantly longer service life than other concrete valves. For noticeably more profit per m³.



Protection of the ROCK inside by concrete triangle



Protection of the ROCK inside by concrete triangle

Easy maintenance.

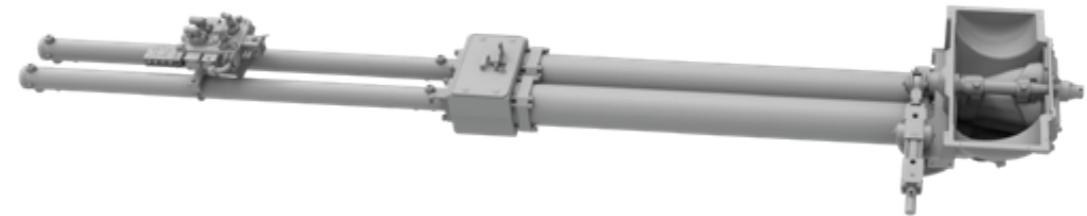
The ROCK valve not only has a significantly longer service life than other concrete valves, it is also easier to maintain. After removing the housing cover, the wear parts are easily accessible and can be replaced quickly and safely. Time-consuming adjustment work is not required after replacement. The ROCK valve's 15 wearing parts is only half the number used in other concrete valves. The maintenance of the ROCK valve: simple, fast and safe.



The long-stroke pump kit P2525

Fewer strokes, smoother boom, less wear.

The SX outriggers from SCHWING enables the installation of a pump kit with 2.50 m long delivery cylinders in this class. For a standard practice delivery rate of almost 60 m³/h, the long stroke pump kit P2525 requires no more than 8 strokes per minute. The wear costs of the S 56 SX are thus reduced to an unrivaled low level and ensure significantly more profit per m³.

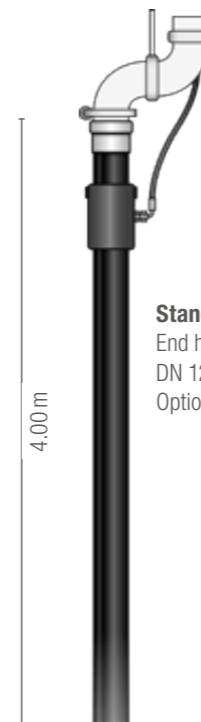


P2525 2.50 m long delivery cylinders

The end hose

For more flexibility.

Our end hose variant of the S 56 SX for middle east markets is of 4.00 m length with a DN 125 installed as standard. On request this end hose variant can be equipped with an end hose stop valve.



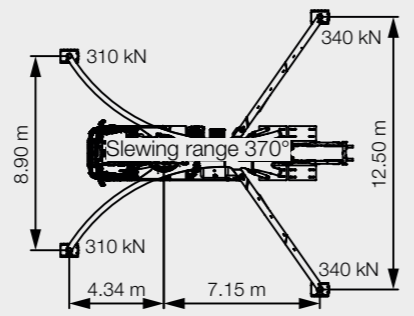
Standard
End hose 4.00 m
DN 125
Option: Concrete shut-off-valve

The S 56 SX from SCHWING
Everything you need.

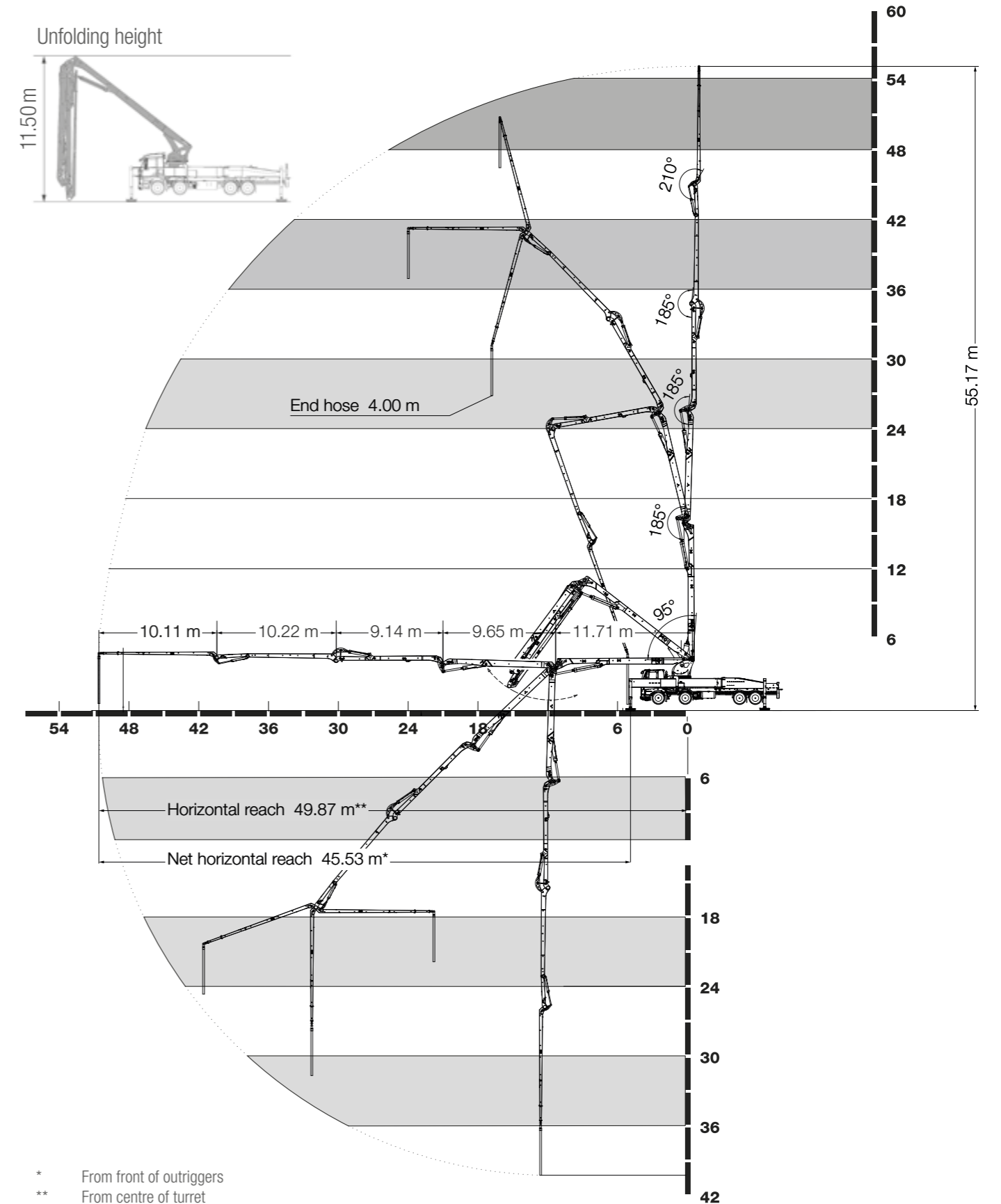


Technical data

Performance		
Pumpkit		P 2525
Drive	l/min	636
Delivery cylinders	mm	250 × 2,500
Concrete output max.	m ³ /h	162
Pressure on concrete max.	bar	85
Stroke rate max.	1/min	22
Concrete valve		B-ROCK
Hydraulic system		
Design		Open system
Hydraulic tank	l	690
Boom		
		56 R
Delivery line		DN 125
Length of end hose	m	4.00
Vertical reach	m	55.16
Reach depth	m	39.80
Horizontal reach	m	49.87 m (from centre of turret)
Net horizontal reach	m	45.53 (from front of outriggers)
Number of boom sections		5
Height of the inflexion points	m	4.35 / 16.00 / 25.70 / 35.00 / 45.00
Slewing range		1 × 370°
Unfolding height	m	11.50
Support		
Outrigger width, front	m	8.90
Outrigger width, rear	m	12.50
Outrigger load, front	kN	310
Outrigger load, rear	kN	340
Chassis (examples*)		
		Mercedes-Benz Arocs 4840 EURO 3 & EURO 5
Axles configuration		8 × 4
Wheelbase	mm	6,950
Length	mm	14,345
Miscellaneous		
Water tank	l	610
Operating weight	t	< 45



Working range



* From front of outriggers
 ** From centre of turret

* Other chassis available on request



schwing-stetter



schwinggroup



schwing-stetter.com



SCHWING concrete pumps. Efficiency as standard.



**SCHWING
Stetter**

SCHWING GmbH
Heerstraße 9-27 · 44653 Herne Germany
Phone +49 2325 987-0 · Fax +49 2325-72 922
www.schwing-stetter.com · info@schwing.de

Stetter GmbH
Dr.-Karl-Lenz-Straße 70 · 87700 Memmingen, Germany
Phone +49 8331-78-0 · Fax +49 8331-78 275
www.schwing-stetter.com · info@stetter.de

Subject to technical and dimensional modifications. Illustrations are non-binding. The exact standard specification, the scope of delivery and the technical data are detailed in the offer.