

# TP 100

## Trailer pump



### SCHWING-POWER

for screed, mortar,  
fine concrete,  
concrete...

Output	max.	22 m <sup>3</sup> /h
Output pressure	max.	85 bar
Grain size	max.	32 mm
Engine output		30 - 36 kW
Machine weight		< 2,100 kg / 4,630 lb



RECORD BREAKING ENGINEERING

# The TP 100 from SCHWING Mobile Power

The TP 100 trailer pump from SCHWING is the mobile powerhouse for construction sites where screed, mortar, fine concrete and concrete with a grain size of up to 25 mm is conveyed efficiently and reliably. Developed from more than 60 years of experience of the construction of concrete pumps and equipped with proven SCHWING components, the TP 100 is the reliable and resilient companion for craftsmen, construction companies and rental companies. The ROCK valve known from truck-mounted concrete pumps and stationary pumps also excels in the TP 100 due to its fast, water-saving cleaning, low wear and tear and extremely easy maintenance. The TP 100: mobile performance and reliability from Germany.

## TP 100 Trailer pump



### Pump kit

Using the powerful P0615 pump battery with piston-side connection, the TP 100 achieves an output of up to 22 m<sup>3</sup> per hour and a maximum output pressure of up to 85 bar. Its high delivery rate and compact dimensions open up a wide range of applications for the TP 100.



The EcoClean process allows all of the conveying material in the pipeline to be used at the point of placing. This reduces the amount of material needed as well as disposal costs, increasing the efficiency of the material pour. All SCHWING pumps are equipped ready for the Eco-Clean procedure ex-factory.

### Operation

The clear operating structure and large-format colour display of the machine control allow for easy and intuitive operation of the TP 100. Machine data, operating modes and selected settings can be retrieved quickly and various parameters can be changed. The integrated diagnosis system supports safe operation and alerts the operator to the maintenance intervals.



### ROCK valve

The XS-ROCK, especially developed for the TP series, enables the problem-free delivery of building materials (screed, mortar, fine concrete, concrete) with a maximum grain size of up to 25 mm. Like all ROCK valves, it has a significantly lower wear compared to other valve systems due to its intelligent design. It is also quick to clean and is demonstrably easier to maintain.



### Maintenance

More productivity through optimum maintenance accessibility: the large maintenance hood of the TP 100 can be unlocked and opened with just one hand. All maintenance points are easily accessible thanks to the large opening angle of the hood. All lubrication points can be reliably supplied with lubricant manually via the standard central lubrication point.



### Motors for every need

Two diesel engines with different exhaust levels and an electric motor are available for the TP 100 drive. The motors ensure high delivery rates and low operating costs due to their performance, efficiency and reliability.

### Diesel engines

- 34.5 kW power, Stage IIIA/Tier 3 exhaust-emission standard
- 36 kW power, Stage V/Tier 4f exhaust emission standard, diesel particulate filter

### Electric motors

- 30 kW power, 50 Hz, efficiency class IE 3
- 36 kW power, 60 Hz, efficiency class IE 3

### Hydraulic system

The key hydraulic components of the TP 100, such as the valve block and the differential cylinders, are developed and manufactured by SCHWING. Their generous dimensions and the open SCHWING hydraulic system guarantee a low-loss conversion of the engine power into the delivery rate. Result: the renowned high energy efficiency of SCHWING pumps.



**MADE IN GERMANY**  
by SCHWING-Stetter

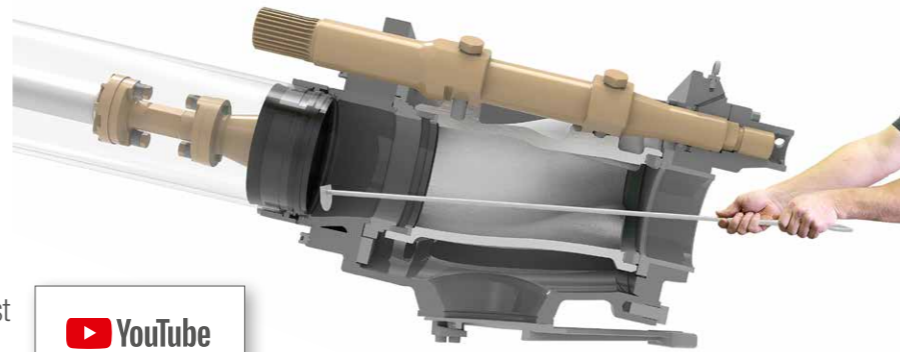
## TP 100 Trailer pump

# Advantages and benefits in detail

### The ROCK

#### Clean faster with less water.

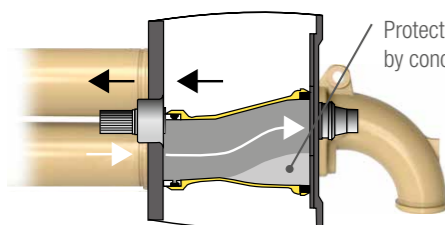
Due to its straight design, in comparison to other concrete valves, the ROCK valve is easier and quicker to clean. It also provides a direct view of the pumping pistons in the delivery cylinder. The pump kit can therefore be cleaned easily and conveniently within just two strokes. This saves water and reduces the time needed for cleaning.



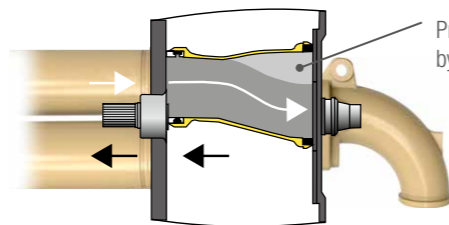
 **YouTube**  
SCHWING-Stetter  
**Tutorial 02**

#### Intelligent wear protection.

The wear in the concrete valve is particularly high as the concrete is fed into the outlet at high pressure. In order to minimize this wear, at the most heavily loaded point of the ROCK concrete does not rub on steel, but rather on concrete. This is because the intelligent design of the ROCK leads to the formation of a concrete triangle after each shift. Protected by this concrete layer, the ROCK has a significantly longer service life than other concrete valves. For noticeably more profit per m<sup>3</sup>.



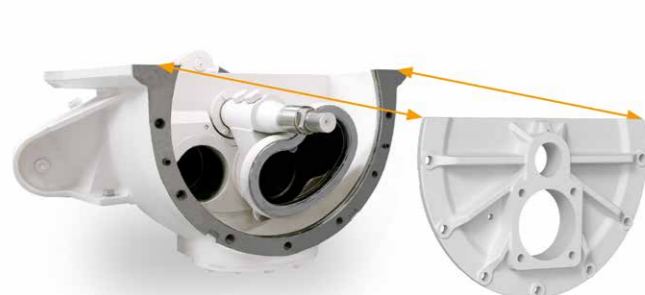
Protection of the ROCK inside by concrete triangle



Protection of the ROCK inside by concrete triangle

#### Easy maintenance.

The ROCK valve not only has a significantly longer service life than other concrete valves, it is also easier to maintain. After removing the housing cover, the wear parts are easily accessible and can be replaced quickly and safely. Time-consuming adjustment work is not required after replacement. The ROCK valve's 15 wearing parts is only half the number used in other concrete valves. The maintenance of the ROCK valve: simple, fast and safe.



# Options

### Remote controls



Cable remote control with 30 m cable



Radio remote control

### VarioPressure



With VarioPressure, the maximum concrete delivery pressure can be manually adjusted using a rotary handle, to protect concrete delivery lines from pressures that exceed their maximum pressure ratings.

### Central lubrication system



The automatic central lubrication system keeps all connected lubrication points regularly supplied with the correct quantity of grease.

### Height-adjustable tow bar



The height-adjustable tow bar allows you to adjust the height of the hitch coupling to the towing vehicle from 450 through to 890 mm. 9 different variants are available for the coupling.

### More options

- |                                 |  |
|---------------------------------|--|
| High-pressure cleaner           | DIN coupling                                       |
| Vibrator on the grid            | Floodlight   |
| 2 wheel chocks including holder | Second license plate holder on the right hand side |
| LED reversing lights            |  |

### Standard equipment

- |  |  |
|--|--|
| Pump kit P0615   | Central lubrication point at the hopper                  |
| Roadworthy chassis (EU road approval, 80 km/h)   | Emergency stop button in the control panel at the hopper |
| Electrically driven ventilator   | 12V battery  |
| Stroke adjustment (electrical)   | 2 rear supporting legs, 1 front supporting wheel         |
| Horn button in the control panel at the hopper   | Pressure gauge to display the hydraulic pressure         |
| COC documentation ex works for quick and easy approval of the trailer pump in all European countries | Ball coupling  |

# TP 100 Trailer pump

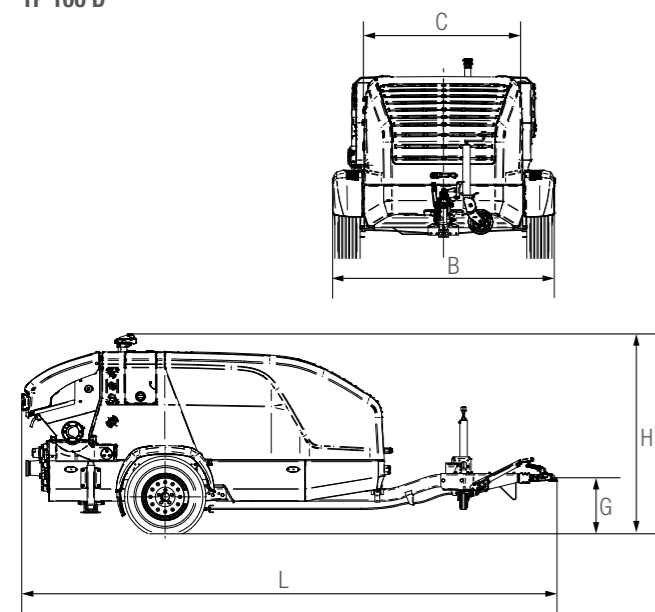
## Technical Data

Designation		TP 100 D Stage IIIA/Tier 3	TP 100 D Stage V/Tier 4f
Weight	kg	2,100	2,100
Length (L)	mm	4,440	4,440
Height (H)	mm	1,630	1,600
Width (B)	mm	1,840	1,840
Width (C)	mm	1,300	1,300
Height of coupling point (G)	mm	430 (Option adjustable: 450 - 890)	430 (Option adjustable: 450 - 890)
<b>Performance</b>		rod-sided	rod-sided
Pump kit		P0615	P0615
Delivery cylinders	mm	150 x 650	150 x 650
Concrete output max.	m <sup>3</sup> /h	22	22
Pressure on concrete max.	bar	85	85
Stroke rate max.	1/min.	32	32
Valve system		XS-ROCK	XS-ROCK
Pressure outlet		DN 100	DN 100
Grain size max.	mm	25	25
<b>Hydraulic system</b>			
Design		open system	open system
Hydraulic tank	l	100	100
<b>Motors</b>			
Engine type		Diesel Deutz D 2011 L03	Diesel CAT C1.7
Engine power	kW	34.5	36
Emission standard		Stage IIIA/Tier 3	Stage V/Tier 4f
Emission control system		-	DPF
Fuel tank	l	75	75

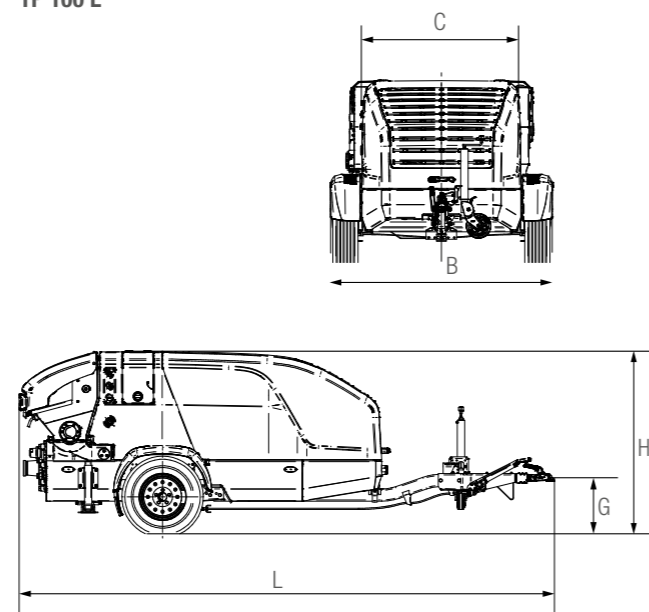
Designation		TP 100 E	
Weight	kg	2,100	
Length	mm	4,440	
Height	mm	1,500	
Width (B)	mm	1,840	
Width (C)	mm	1,300	
Height of coupling point (G)	mm	430 (Option adjustable: 450 - 890)	
<b>Performance</b>		rod-sided	
Pump kit		P0615	
Delivery cylinders	mm	150 x 650	
Concrete output max.	m <sup>3</sup> /h	22	
Pressure on concrete max.	bar	85	
Stroke rate max.	1/min.	32	
Valve system		XS-ROCK	
Pressure outlet		DN 100	
Grain size max.	mm	25	
<b>Hydraulic system</b>			
Design		open system	
Hydraulic tank	l	100	
<b>Motors</b>			
Engine type		Electric motor	Electric motor
Engine power	kW	30	36
Frequency	Hz	50	60
Efficiency class		IE3	IE3

Maximum concrete output and maximum pressure on concrete cannot be achieved simultaneously.  
DPF: Diesel particulate filter

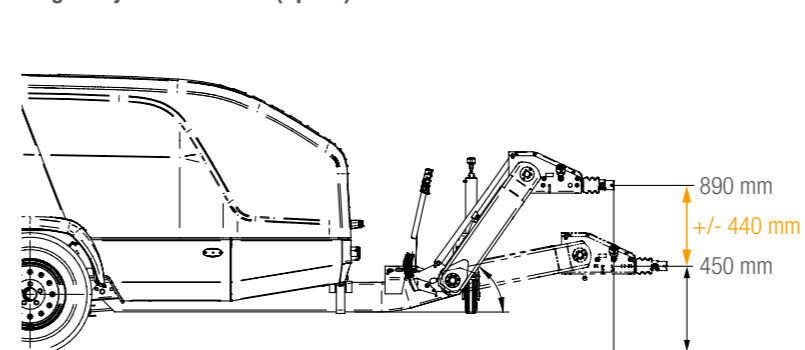
TP 100 D



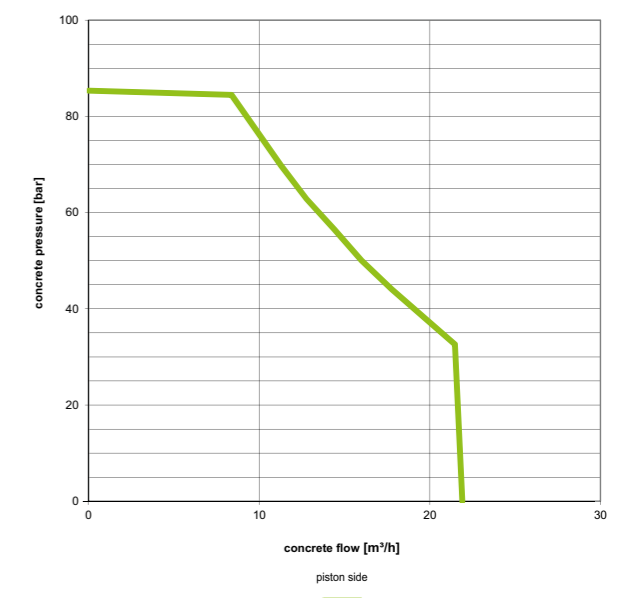
TP 100 E



Height-adjustable tow bar (Option)



Performance Chart





schwing-stetter



schwing.stetter



Trailer pumps from SCHWING.  
The mobile power.



**SCHWING**  
**Stetter**

SCHWING GmbH  
Heerstrasse 9-27 · 44653 Herne, Deutschland  
Phone +49 23 25 - 987-0 · Fax +49 23 25 - 72922  
www.schwing-stetter.com · info@schwing.de

Stetter GmbH  
Dr.-Karl-Lenz-Strasse 70 · 87700 Memmingen, Deutschland  
Phone +49 83 31 - 78-0 · Fax +49 83 31 - 78 275  
www.schwing-stetter.com · info@stetter.de

Subject to technical and dimensional modifications. Illustrations are non-binding. The exact standard specification, the scope of delivery and the technical data are detailed in the offer.